



**2014**

:  
( ) " " :

" "

**حمزة ناجي الجراجرة**

حمزة ناجي الجراجرة

	:
1	1.1
4	2.1
5	3.1
5	4.1
	:
7	1.2
7	1.1.2
9	2.1.2
10	3.1.2
11	4.1.2
14	5.1.2
15	2.2
15	1.2.2
17	2.2.2

17	3.2.2
19	4.2.2
20	5.2.2
21	6.2.2
23	3.2
25	1.3.2
40	2.3.2
53	3.3.2
	:
69	1.3
69	2.3
72	3.3
73	4.3
73	5.3
76	6.3
	:
90	1.4
109	2.4
109	3.4
112	
115	

28	-	1
31	-	2
32	-	3
44	-	4
45	-	5
45	-	6
56	-	7
58	-	8
59	-	9
60	-	10
70		11
74		12
75	( )	13
78		14
79		15
80		16
81		17
82		18
83		19
84		20
85		21
87		22
88		23
89		24
89		25

91 (%) 26

97 (%) 27

103 (%) 28

71	1
71	2
71	3
79	4
80	5
81	6
82	7
83	8
84	9
85	10
86	11



24					1
26					2
29				-	3
30				-	4
30					5
33				-	6
33				-	7
39					8
41					9
43	-				10
43				-	11
46				-	12
46				-	13
47			-		14
52		-			15
52				-	16
53				-	17
55					18
57		-			19
57				-	20
61				-	21
61				-	22
67				-	23
67				-	24
68				-	25
68				-	26



**2014**

:

.

.

.

.

.

.

## **Abstract**

### **Natural Reserves in Jordan and its Role in Tourism Development**

**Hamzeh Naji Aljarajrh**

**Mu'tah University, 2014**

This study aimed to publicize and identify the natural reserves in Jordan . The sample of this study is three reserves : Ajluin forest reserve, Mujib biosphere reserve, and Dana biosphere reserve. Also this study aimed to identify the elements of attractions, and the natural resources of the reserve, and to highlight the impact of each of these elements and resources on tourism in these natural reserves.

The study included four chapters as well as introduction, and conclusion, and appendices of tables and maps and pictures.

Chapter (I) dealt with the background of the study, its significance, and problem of the study in addition to questions and objectives.

Chapter (II) dealt with the concept of tourism and tourist, obstacles of tourism in Jordan, tourism places in Jordan and their role in tourism development, the concept of reserves in Jordan, and its types, as well as its role in tourism development and in details with Ajloun forest reserve, Mujib biosphere reserve, and Dana biosphere reserve where it focused on each reserve in terms of location, climate and biodiversity, and the role of each reserve in tourism development.

Chapter (III) dealt with the methodology of the study, test validity and reliability, and statistical methods used in the study.

Chapter (IV) dealt with the conclusion and discussion, general characteristics of tourists and their motives for visiting these reserves, and the role of these natural reserves in tourism development, and suggested methods for tourism development in these reserve.

## 1.1

).

(2009

(2001 ) .

(2001 ) (1991 )

600

23

1965

( 2008

)

1966

([WWW.rscn.org.jo](http://WWW.rscn.org.jo))

:

:

1989

1100

2 12

20 283  
16 14 54

8  
(2009 ) .  
:  
1987  
2 212

( )  
500  
24 150

.  
:  
1993  
2 290

50 32  
(2008 ) .

.

:

**2.1**

.

:

:

-1

-2

-3

:

-

-

-

-

-

-

( )



: **3.1**

.

:

-1

.

-2

.

-3

)

.(

: **4.1**

:

):

-1

.(

-2

.

-3

-4

:

-1

. - - - -

-2

-

-3

.

:

**1.2**

:

**1.1.2**

8

} :

" " {

( ) .

:

(USNTRRC)

80.5

:

(USCB)

(170)  
(2010 )

:

(2006 )

:

(2009 ) .  
(Ecology) (Ernest Haeckel)  
1866 ( )  
logos oilkes  
)

( )  
(2006 ) .(

(Despax, 1985)

(2010 ) .

(Fennell, 1999) .

2003

:

(TIES, 2003 )

: **2.1.2**

1968

24

( Cooper, 1998)

24

12

(2000 ) .

:

(2009 ) .

: **3.1.2**

:

(2007 ) .

:

( )

(2007 )

( 2010 ) :

.1

.2

.3

.4

.5

.6

**4.1.2**

:

. (2006 ) .

):

(2008

%5.6

:

:

110

:

-

16-10

70

:

-

%33

(2001 ) .

150 : -

:

600

:

(1991 ) .

%5.8 :

) :

) ( 1097 ) ( 1247

( 1952

) .

(2001

%11 :

:

:

:

.

.

:

:

.

.

.

%77.4 :

:

:



) .

(2001

:( )

(2008 ) .

:

:( )

( )

:

· - ·

- ·

· - ·

· - ·

· - ·

:

(2008 ) . 2007\7\7

:

**5.1.2**

:

(Rogerson, 2007) .

(Beaver, 2005) .

(2013 ) .

)

(

(2010 )

:

:

.

2008

(2010 ) .

:

**2.2**

:

**1.2.2**

) .

(1994 ) (2009

) .

( 2008

1992

:

Representative Ecological Unit

(2010 ) .1982

1970

( )

1972

130

%5

20000

33

100.000

) . 12926.706

Tsavo

(2001

: **2.2.2**

(2006 ) .

: **3.2.2**

.1

.2

.3

.4

:

:

).

(2008

:

(2013 ) .

:

:

.

(2008 ) .

: **4.2.2**

4 1

(2006 ) .

(Andy & Alan, 2002) .





-7

) .

(2010

:

**6.2.2**

:

:

-1

(2006 ) .

:

-2

(2010 ) .

:

-3

:  
(2006 ) .

: -4

: -5

(2001 )

: -6

: -7

) .

(2010

: -8

(2001 ) .

:

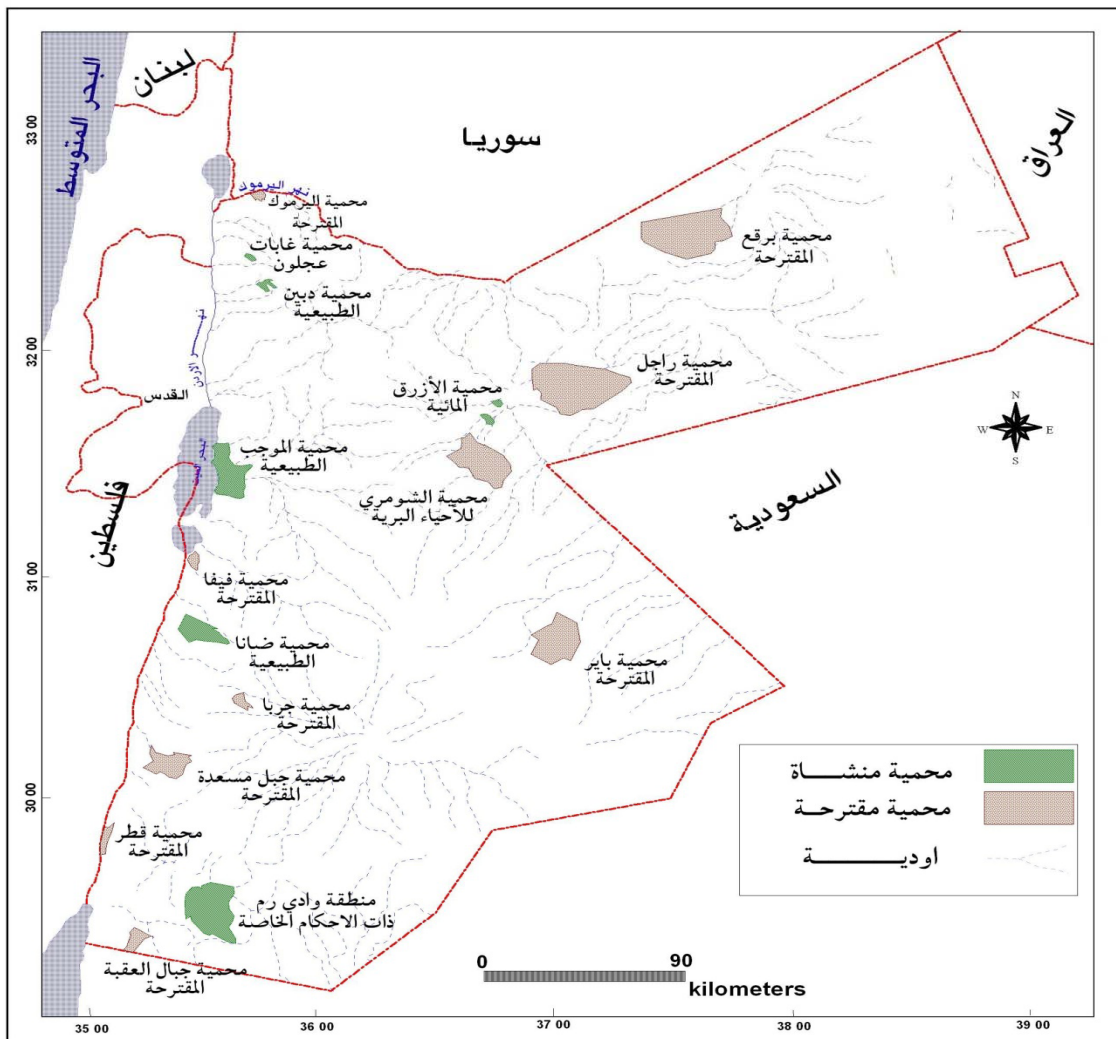
**3.2**

1966

%100

(www.rscn.org.jo)

(1)



(1)

2013 -

:

1.3.2

:

1989

1978

(IUCN)

1989

[www.rscn.org.jo](http://www.rscn.org.jo) .

12 ( )

:

700

1100

12

75

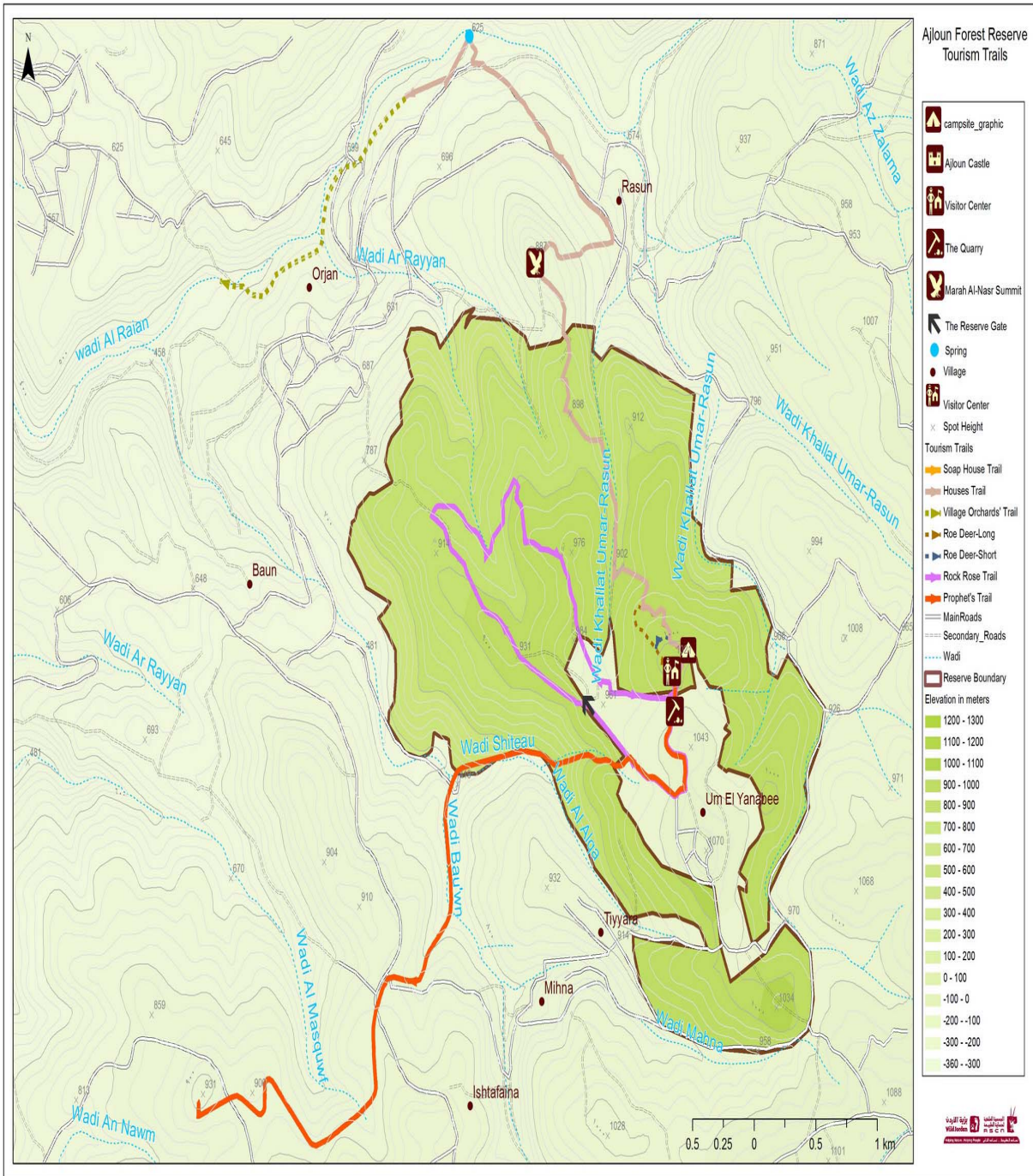
(2)

:

.( 32 23.806) ( 35 44.148) .1

.( 32 21.792) ( 35 46.614) .2

.(2008 )



( 2 )

2013 -

:

600-400

(6)

30

(9)

(2)

(12)

( 2012 ) .

:

)

(

190

86

3

(CITES)

:

Cyclamen

Orchis anatolica

) .Hesperis Pendula

persicum

(2008

2011

(411)

(2011 ) .

%22

%22

%56

(3)

(1)

.

.(5) (4)

( 1 )

-

---

Hyaena hyaena

Canis Lupus

Canis aureus

Vulpes Vulpes

Felis sylvestris

Meles meles

Martes foina syriaca

Vormela syriaca ( )

---

(2011 )





( 3 )

2013 -

-

:



( 4 )

2013 - - :



( 5 )

2013 - - :

Hystrix indica

:

Anomalus syriaca

2000

70-60

( 2 )

( 2 )

-

---

1	Testudinidae
1	Agamidae
4	Gekkonidae
3	Lacertidae
1	Scincidae
1	Chamaeleonidae
1	Leptotyphlopidae
3	Colubridae
1	Viperidae

---

(2011

)

Testudo graeca

:

Lacerta media

Chamaeleo chawaeleon

. Cyrtopodion kotaschy

(3)

( 3 )

-

---

Alectoris chukar

Turdus merula

Sylvia curruca

Parus caeruleus

Parus major

Garrulous glandarius

Carduelis chloris

Falco tinnunculus

Vpupaepops

---

(2011

)

2000

40

(20012

) .



( 6 )

-

2013 -

:



( 7 )

-

2013 -

:

) ( : )  
(2013

(2013 )

:  
-1  
-2

-3

...

-4

-5

:

(2013 - ) .

100

( 2013 ) .

( 2013 ) .

40

2009

60

2012

(8) .

: .

:

2

18 4



3-2

7-6

:

18-4

4

4

7-6

:

:

12

18

6

6

:

8

18-4

4

:

18

4

4

5 8

:

18

18 4

·  
:

4

3

23

2011

(2010

)

) .

14500 2012

( 2012



( 8 )

2013 -

-

:

2.3.2

:

1987

1979

2011

( )

(www.rscn.org.jo) .

212

27

:

( 31 36,987) ( 35 329,33)

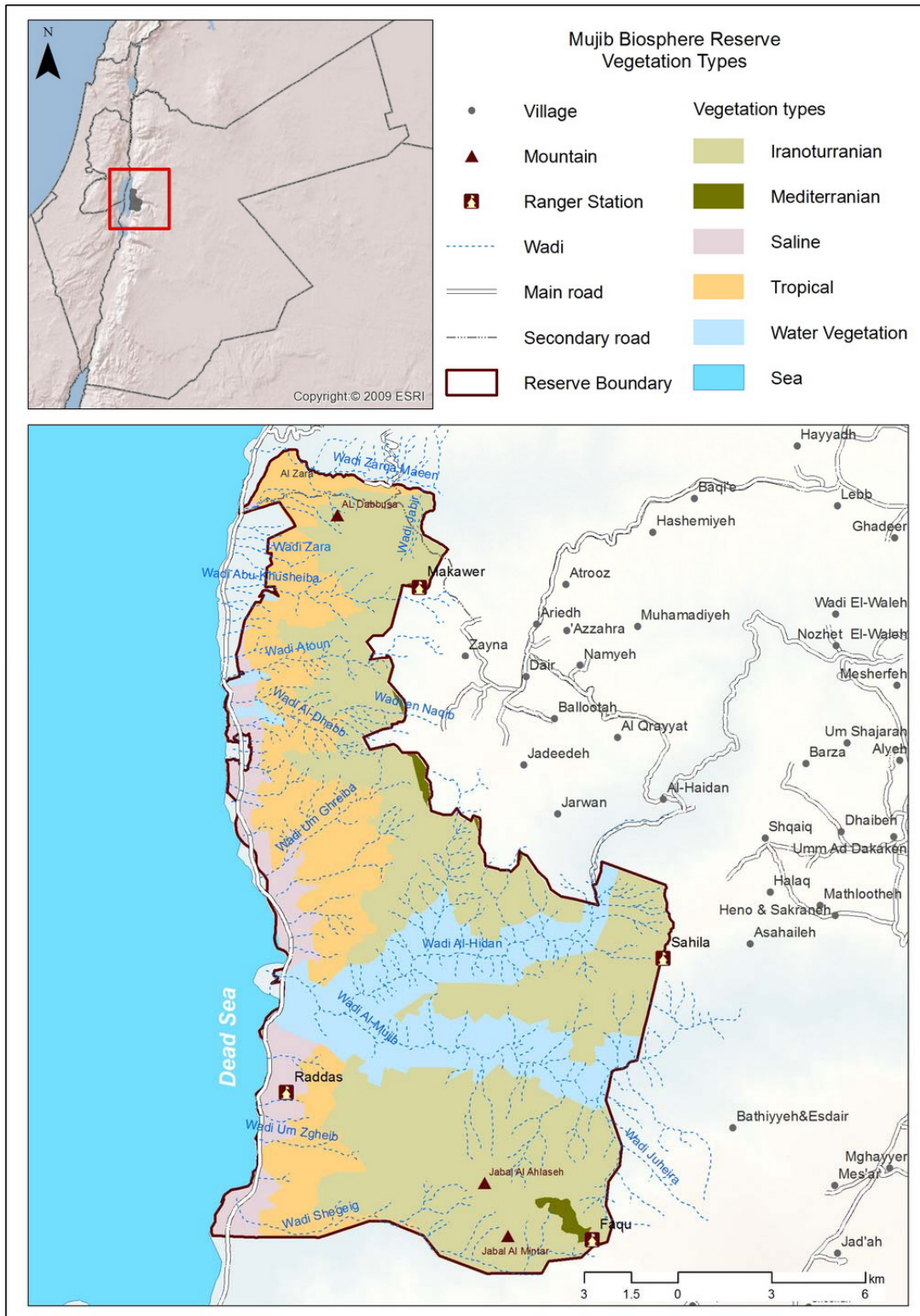
( 31 22,762) ( 35 42,183)

800

396

) (9)

(2008



(9)

2013 -

:

396

800

70

360

:

).

(2001

:

43

147

500

:

15

22

12

(11) (10) (4) .



( 10 )

-

2013 - :



( 11 )

-

2013 - :

(4)

-

---



---

Withanei Sowniferi
Crocus Cartwrightianous
Cucumis Prophetarm
Retama Reatam
Atriplex Leucoclado
Teucrium polium

---

(2012 )

:

30

50

3

3

3

21

WlteRinnesia Aegyeta

:

Echis coloratus

10

24

Atractasbis Engadensis

(12)

(5)

.



(5)

-

---

---

	Cenis Aureus	
	Cenis Lupus	
	Vulpes Cana	
	Mellivora Capensis	
	Hyaena Hyaena	
	Caracal Caracal	
	Panthera Pardus nimr	
	Capra ibex Nubiana	
	Gazella Sazella	
	Procavia Capensis	

---

(2012 )

150

(14) (13) (6) .

(6)

-

---

---

\	Falco Naumanni	
\	Aquila heliaaca	
	Sulvia Melanothorax	
\	Sulvia Vueppeli	
\	Neophron percnopterus	
	Hieraaetus fasciatus	
	Gyps fulvus	
\	Accipiter brevipes	
	Oenanthe oenanthe	
	Turdoides squamicaps	
	Passer moabiticus	

---

(2012 )



( 12 )

2013 -

-

:



( 13 )

2013 -

-

:



( 14 )

-

2013 -

:

:

2002

(2008

) :

Buck hart

13

34

(Atiat, 2006) .

3

3

(Atiat, 2005)

( )

(Atiat, 2005) .

10

200

200

(Atiat, 2006) .

3 5

:

).

(2013

1997

400

):

(2013

2002

30

15

15

(15)

5

3

(2013 ) :

:

4

8

20

(2013

) (16)

.

:

4

8

20

:

8-6

3-2

8

(17)

20

:

3

8

:

- 5

6

8

20

.

35 2012

(2012

) .



( 15 )

-

2013 - :



( 16 )

-

2013 - :





( 17 )

2013 - - :

: 3.3.2

1993

1995

1998

([www.rscn.org.jo](http://www.rscn.org.jo)) . 292

1500

200

100

:

25

(18)

( 30 48,882)	( 35 23,461)	-1
( 30 37,095)	( 35 38,498)	-2
	(2008	)

300  
( )

:

4

1200

800-400

400-200

( 2012 ) .

200



(20) (19) (7) .

( 7 )

-

---

PISTACIA AHANTICA

Acacia tortilis

Juniperus Phoenicia

Quercus calliprinos

Globularia Arabica

\ Artemisia herba-alba

Phamnus punctata

Gymnocarpos decandrum

Retama raetam

\ Echinops Polyceras

Silene danaensis

Micromeria danaensis

---

(2012 )



( 19 )

-

2013 - :



( 20 )

-

2013 - [www.borsaat.com](http://www.borsaat.com) :

833

71                      698

2374

( 2012                      ) .

258

17                      12

Bufo viridic                      :

42                      Hyla saviginii

(21)                      (8)                      .

**( 8 )**

-

---



---

	Varanus griseus
	Vromasix aegyptic us macrolepis
	Chamaleo chameleon
\	Testudo greca

---

(2012                      )

1992

(9)

(9)

-

---

Canislupus

Caracal caracal

Felis silvestris

Vulpes cana

Hyaena hyaena

Capra ibex nubiana

Procavia capensis

Gazella dorcas

---

(2012

)

215

(22)

(10)

( 10 )

-

---

---

	Falco naumanni
	Serinus syriacus
\	Aquila clanga
	Chlamyaotis undnlata
\	Aquila heliacal
\	Circus macrourus
\	Passer moabiticus

---

) .

(2008

) .

(2012





( 21 )

2013 - - :



( 22 )

2013 - - :



(Finlayson & etal, 2000) .

) .

(2013

) .

(2013

:

:

1995

:

9

(24) (2012 ) .

1993

( )

:

7 1

3

2

20

(2013 ) (25) .

2005

2000

26 :

2

60

(2012 ) (26) .

) :

( -  
:

1:30

2

20-4

3

8

.

31

15

:

8

20-4

4

.

:

20 4

2

.

:

3

8 -4

5

7

14

20- 10

:

8

16

20-10

:

10

19

20 10

:

2012

(916 141)

(294,610)

5501

134

7798

(2012

).

4430



( 23 )

-

2013 - :



( 24 )

-

2013 - :



( 25 )

2013 - - :



( 26 )

2013 - - :



1.3

:

:

:

2.3

320 2012

.(2012

)

480

)

( 2013      8/1 -5/1)      (

550

30      510

480

(140)

% 29      (140)      % 29

(2) (1)      (1)      % 41      (200)

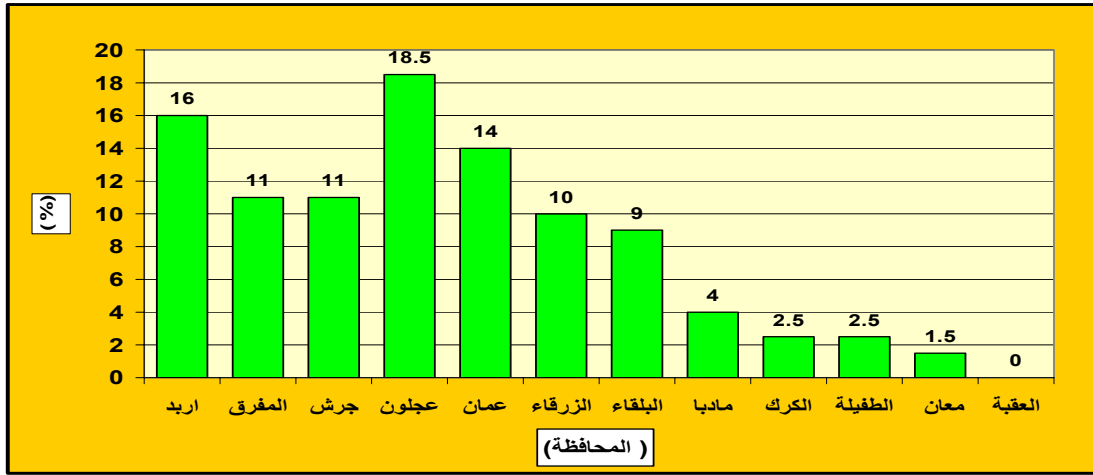
(3)

(11)

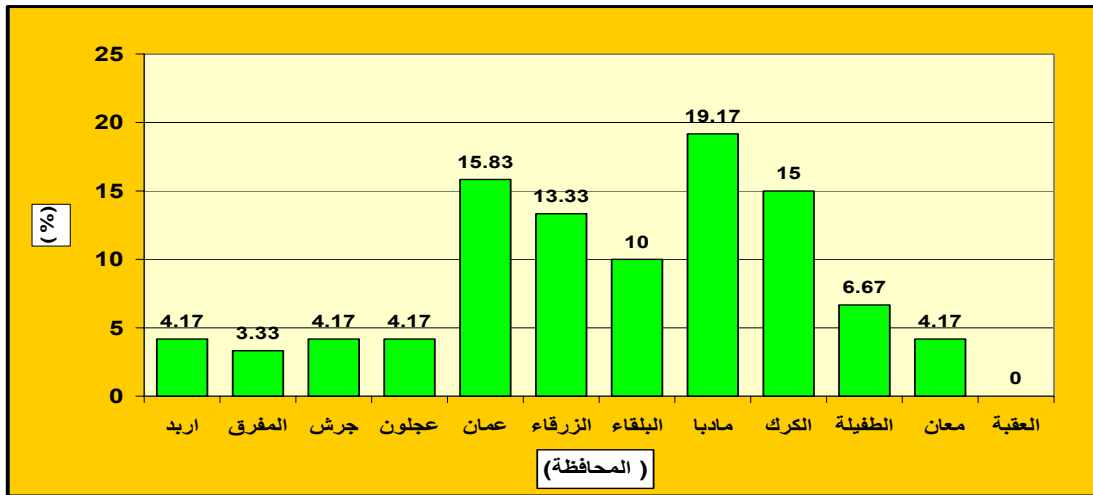
---

(%)		(%)		(%)	
16.00	32	1.67	2	4.17	6
11.00	22	2.50	4	3.33	5
11.00	22	0.83	1	4.17	6
18.50	37	1.67	2	4.17	6
14.00	28	13.33	19	15.83	22
10.00	20	10.00	14	13.33	19
9.00	18	8.33	12	10.00	14
4.00	8	7.50	11	19.17	27
2.50	5	18.33	26	15.00	21
2.50	5	26.67	37	6.67	9
1.50	3	6.67	9	4.17	6
0.00	0	2.50	4	0.00	0
100.00	200	100.00	140	100.00	140

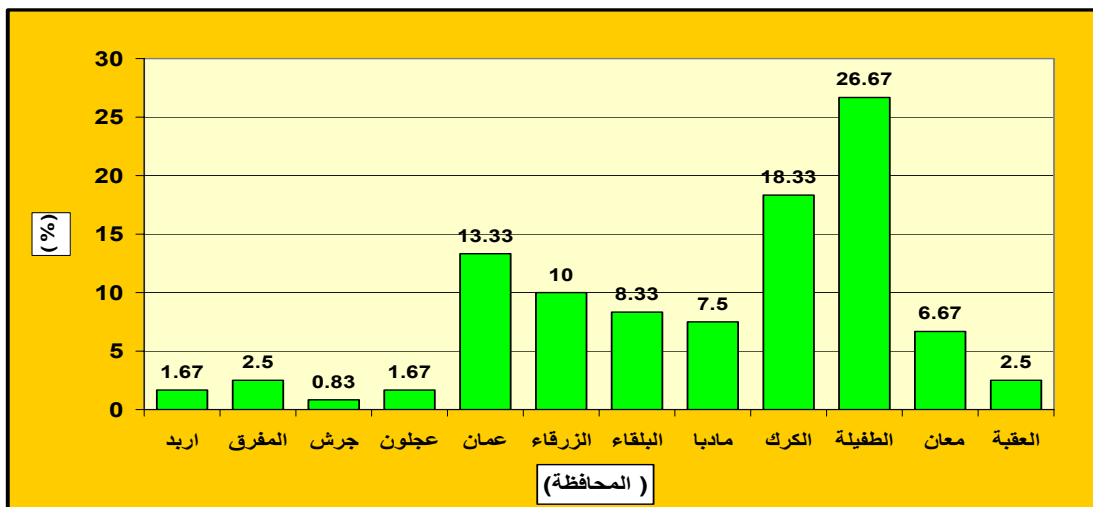
---



(1)



(2)



(3)

" "

.

:

:

:

:

:

.

:

)

.(

3

(45)

:

:

(15)

:

.

(15)

:

.

(15) :

.

: **4.3**

:

.1

:1

.2

.500/000

:

( )

: **5.3**

-

50

Pearson

.(12)

( 12 )

---

:

---

**0.80	1	**0.64	1	**0.44	1
**0.69	2	**0.70	2	**0.61	2
**0.34	3	**0.28	3	**0.50	3
**0.50	4	**0.76	4	**0.51	4
**0.51	5	**0.66	5	**0.59	5
**0.59	6	**0.65	6	**0.27	6
**0.27	7	**0.54	7	**0.71	7
**0.71	8	**0.34	8	**0.68	8
**0.68	9	**0.72	9	**0.46	9
**0.55	10	**0.64	10	**0.50	10
**0.75	11	**0.70	11	**0.51	11
**0.65	12	**0.28	12	**0.34	12
**0.43	13	**0.76	13	**0.43	13
**0.80	14	**0.66	14	**0.71	14
**0.33	15	**0.39	15	**0.25	15

---

:                    .(0.01)                    \*\*

(12)

(0.25 0.75)

(0.01)

:                    -

:

: -2

( )Cronbach Alpha

.(13)

(13)

( )

---

( )

---

0.88	15
0.86	15
0.76	15
0.89	45

---

:  
:  
:

(13)

0.86

0.88

0.89

0.76

:

(Likert)

:

- .( 5) ( ) .1
- .( 4) ( ) .2
- .( 3) ( ) .3
- .( ) ( ) .4
- .( ) ( ) .5
- ( )

:

:

$$(5-1=4)$$

:

$$(5 \div 4=0.80)$$

( )

:

- ( 1.80 1) (1
- (2.60 1.81 ) (2
- (3.40 2.61 ) (3
- (4.20 3.41 ) (4



(5.00 4.21 ) (5

:

( 2.49) (3.49-2.5) ( 3.5)

(3.5)

(3.49-2.5)

(2.49)

SPSS

:

(Descriptive Statistic Measures)

(1

(2

Cronbach Alpha

(3

.

:

480

.

:

**-1**

**( 14 )**

---

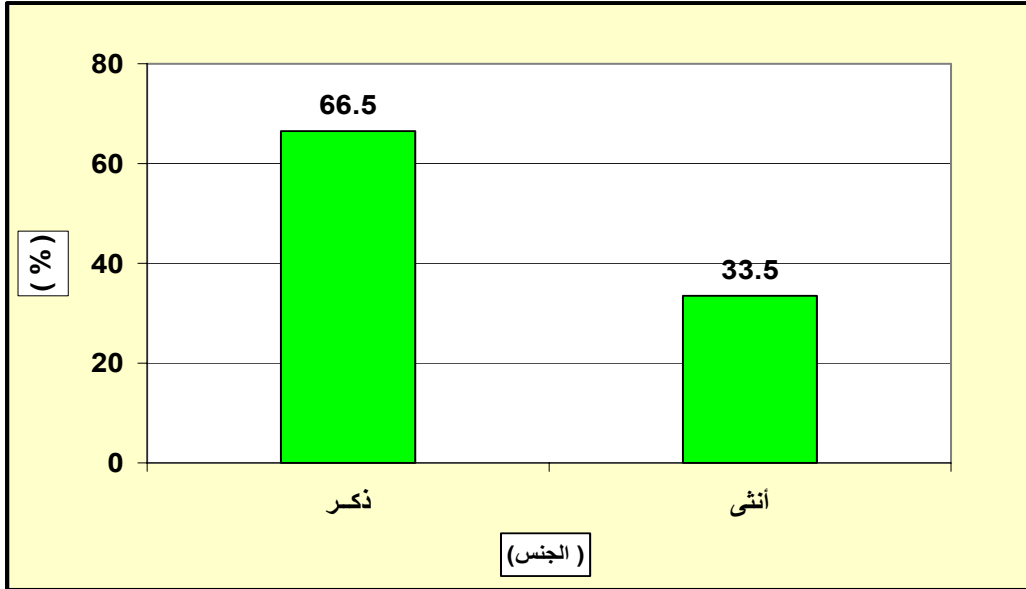
%	
66.5	319
33.5	161
100.0	480

---

(14)

(4) % 33.5

% 66.5



( 4 )

-2

( 15 )

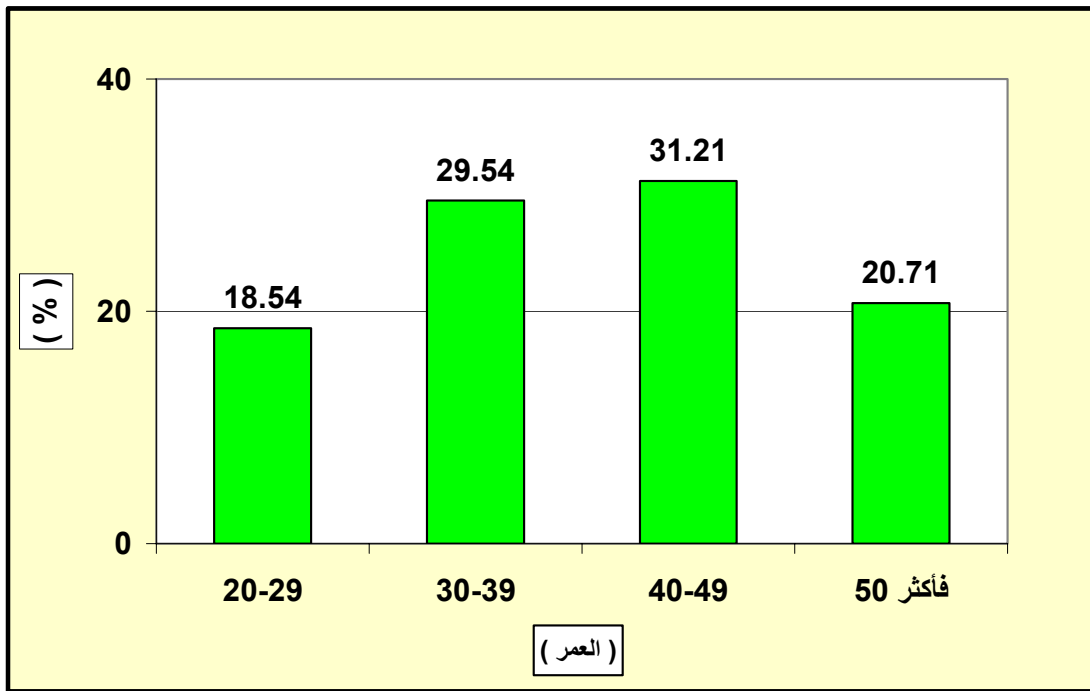
%	( )
18.54	89
29.54	142
31.21	150
20.71	99
100.0	480

(15)

(49-40)

%31.21

18.54 (29-20) % 29.54 (39-30)  
 ( 5 ) %



( 5 )

-3

( 16 )

%	
28.6	137
15.8	76
46.1	221
9.5	46
100	480

(16)

% 28.6

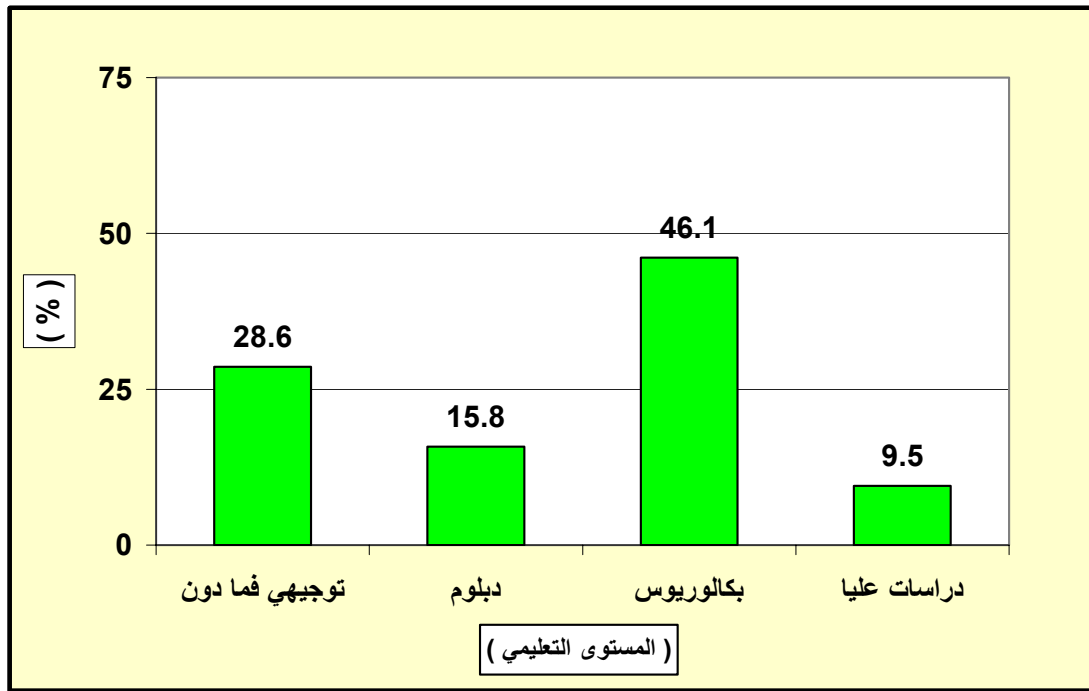
%46.1

%9.5

(6)

%15.8

80



( 6 )

-4

( 17 )

.	
%	
56.4	271
33.8	162
4.6	22
5.2	25
100	480

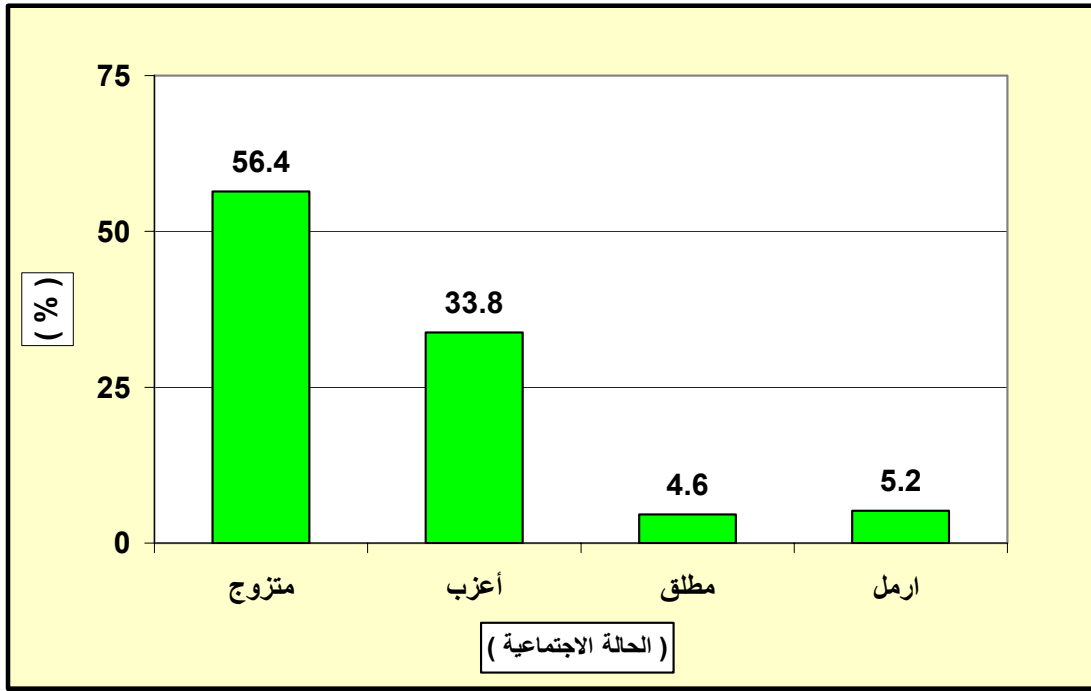
(17)

% 33.8

% 56.4

.% 5.2

%4.6



( 7 )

-5

(8)

(18)

% 33.2

%36.4

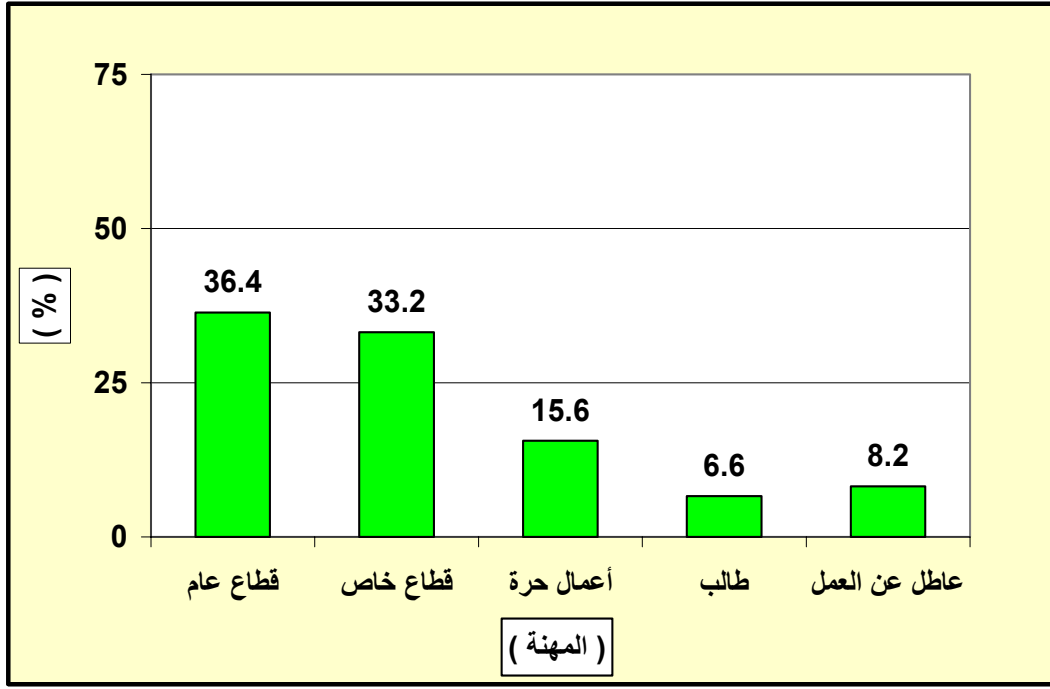
% 15.6

% 6.6

.% 8.2

( 18 )

%	
36.4	175
33.2	159
15.6	75
6.6	32
8.2	39
100	480



( 8 )

:

:

-1

(19)

( 19 )

%	
75.4	362
13.2	63
8.8	42
2.6	13
100	480

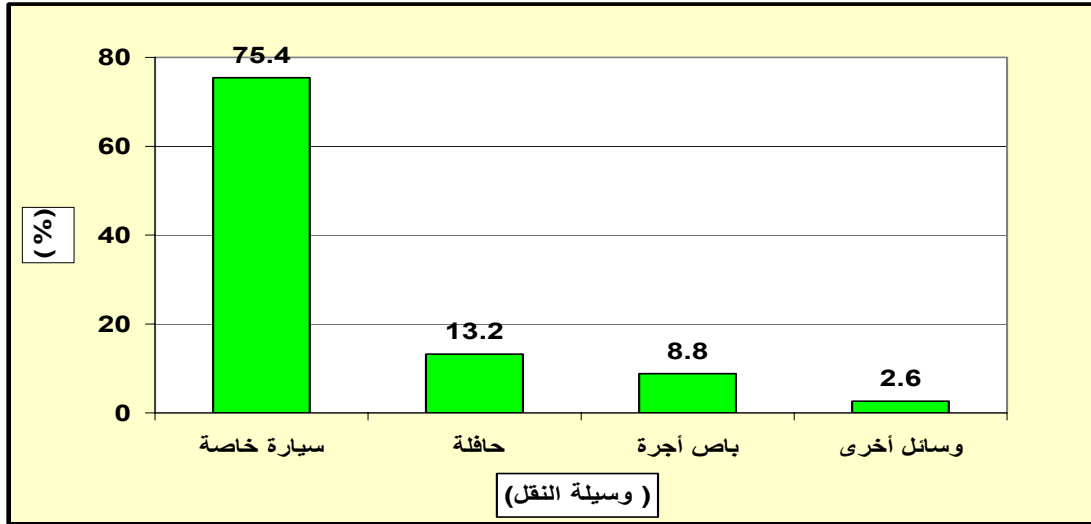
(19)

% 75.4

% 13.2

% 8.8

% 2.6



( 9 )

-2

( 20 )

( 20 )

%	
15.9	76
55.7	268
22.9	110
5.5	26
100	480

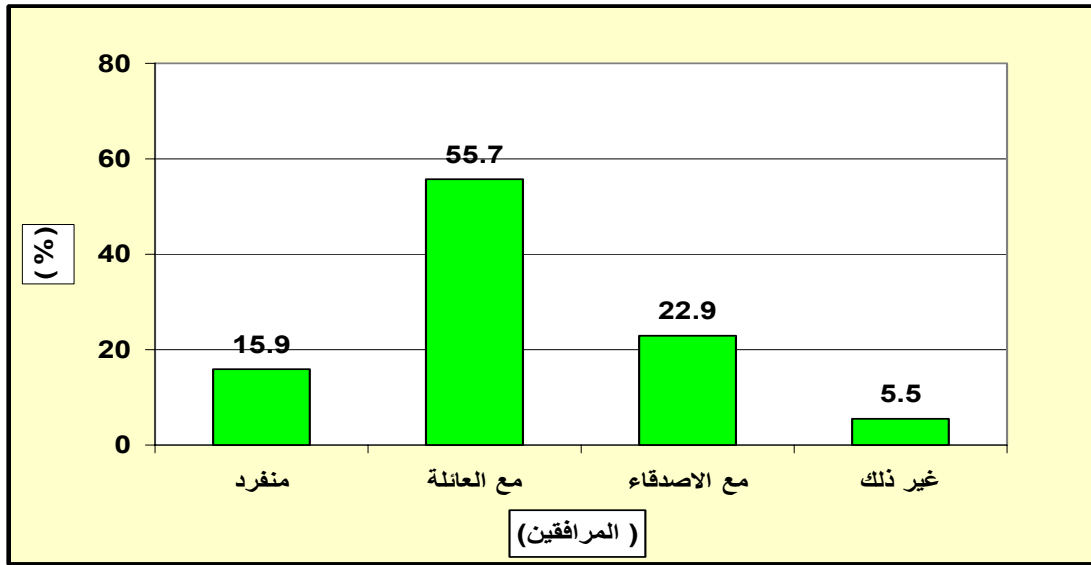
(20)

% 55.7

% 22.9

%15.9





( 10 )

-3

(21)

( 21 )

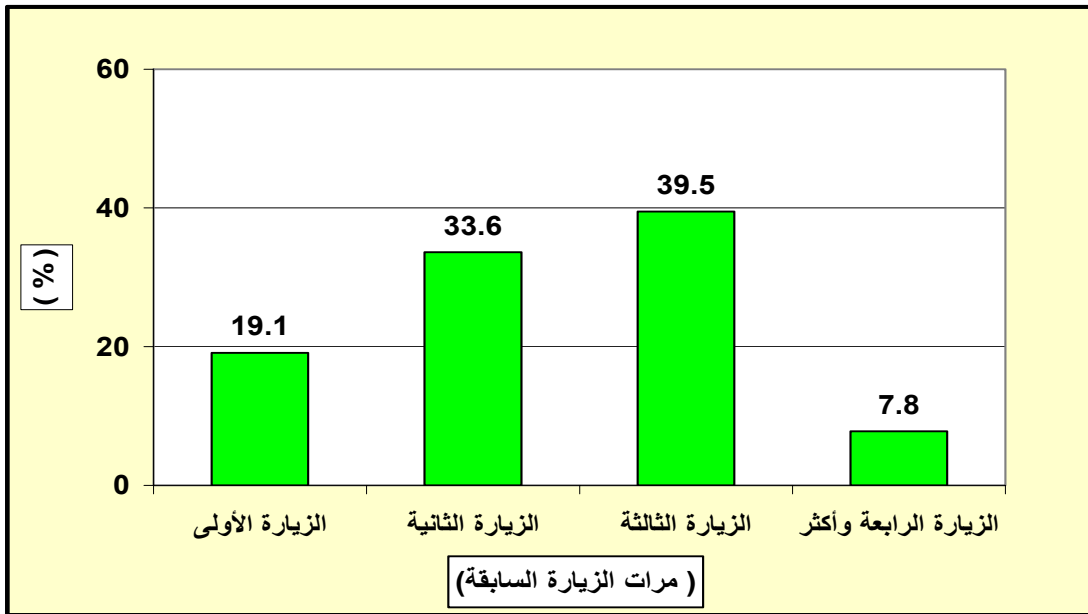
%	
19.1	92
33.6	161
39.5	190
7.8	37
100	480

(21)

6 33

% 39.5

.% 19.1



(11)

-4

(22)

( 22 )

---

(%)	
53.13	255
31.25	150
7.14	34
6.70	32
1.79	9
100.00	480

---

(22)

% 53.13

% 31.25

% 7.14

1.79

.

-4

(23)

( 23 )

---

(%)	
44.43	213
35.29	169
9.14	44
6.6	32
1.99	10
2.79	12
100	480

---

( 23 )

% 35.29

% 9.14

.% 1.99

% 44.43

**-4**

( 24 )

( 24 )

---

(%)	
41.7	200
44.1	212
6.14	29
6.44	31
1.62	8
100	480

---

(24)

% 44.1

% 44.1

( 25 )

---

(%)	
12.34	59
15.41	74
20.19	95
14.53	70
19.4	93
15.13	73
3.44	14
100	480

---



:

(26)

:

( 26 )

(%)

---

%

---

1	84.20	4.21	3
2	83.60	4.18	5
3	78.60	3.93	10
4	78.40	3.92	1
5	78.40	3.92	4

6	77.40	3.87	2
7	75.80	3.79	9
8	74.80	3.74	15
9	74.40	3.72	12
10	73.20	3.66	6
11	72.20	3.61	7
12	71.80	3.59	14
13	70.00	3.50	13
14	67.00	3.35	8
15	66.60	3.33	11
-	75.00	3.75	

---



(26)

(% 75) (3.75)

.

:

(26)

(%84.2)

: (26)

-1

(% 83.60 )

.

-2

(% 78.60 )

-3

-4

(% 78.40 )

-5

(% 77.40 )

-6

(% 75.80 )

-7

(% 74.80 )

-8

(% 74.40 )

-9

(% 73.20 )

-10

(% 72.20 )

-11

(% 71.80)

-12

(% 70.00 )

-13

(% 67.00 )

-14

(% 66.60 )

:

( 27 )

:

(%)

---

	%		
1	87.783	4.389	7
2	85.967	4.298	5
3	80.518	4.026	12
4	78.904	3.945	14
5	78.702	3.935	15
6	77.491	3.875	3
7	77.289	3.864	2
8	75.271	3.764	8
9	74.061	3.703	9

10	72.850	3.642	11
11	70.428	3.521	1
12	68.208	3.410	13
13	68.007	3.400	4
14	65.181	3.259	6
15	58.320	2.916	10
-	74.20	3.71	

---

( 27 )

(% 74.20)      (3.71)

:

-1

(%87.78)

-2

(% 85.967)

-3

(% 82.518)

-4

(% 78.90 )

-5

(% 78.70 )

-6

(% 78.00 )

-7

(%75.28)

-8

(% 75.27 )

-9

(% 74.06)



-10

(% 72.85 )

-11

(% 70.42 )

-12

(% 68.20 )

-13

(% 68.00 )

-14

(% 65.18 )

-15

..  
(% 62.32 )

:

:

( 28 )

(%)

---

	%			
1	88.830	4.442		
			.	4
2	88.238	4.412		
			.	8
3	87.843	4.392		
				10
4	87.448	4.372	(..	)
			.	1
5	87.251	4.363		
			.	3
6	87.053	4.353		
			.	11
7	86.066	4.303		
			.	15
			)	
8	85.277	4.264	(...	
			.	2
9	83.895	4.195		
			.	6

---

10	81.131	4.057	
			7
11	79.355	3.968	
			12
12	77.183	3.859	
			14
13	76.591	3.830	
			13
14	67.906	3.395	
			9
15	65.537	3.277	
			5
-	81.974	4.099	

---

( 28 )

(%81.97) (4.009)

:

-1

(%93.20)

-2

(%88.23)

-3

"

"

87.84)

-4

)

(..

(%87.44)

-5

(%87.25)

-6

(%87.05)

-7

(%86.02)

-8

)

(...

(%85.27)

-9

(%83.89)

-10

(%81.13)

-11

(%79.35)

-12

(%77.18)

-13

(%76.95)

-14

(%76.90)

-15

(%65.53)

(

)



·  
:

**2.4**

)

480 (

·  
:

**3.4**

:

)

-1

(

·  
-2

-3

-4

-5

-6

-7

( )

.

:

-

:1991

.

:2010

.

-

.2010 -

. 2011 -

. 2012 -

:2007

**. 2011-2007**

:2008

**. 2011 -2008**

:2008

**. 2011 -2008**

:2006

.

-

:2013

.

:2006

.

-

:2006

.

-

:2012

.

- :2009  
.  
:2009 -  
: 2013  
.  
:2001  
.  
:2008 -  
:  
.  
:2001 -  
.  
:2001  
.  
:2001  
.  
:2013  
" :2013  
" "  
.  
- :2009  
.  
:2007  
-  
:2008  
.  
:2010  
.  
-

- ( ) :2002
- 
- :2009
- :2007
- 
- :2013
- 
- 2013 - 2010
- :2008
- 
- :
- 
- Andy ,D and Alan M. 2002, **Ecotourism Development: A Manual For Conservation planners and Managers**. Vol 1: An Interoduction Ecotoursim planning. Nature conservation, Arlington, Virginia, U.S.A .
- Atiat ,T.M. 2005, A Nabataean Sanctuary at-Mujib Nature Reserve: a Preliminary Notice , **LEVANT**,V37, Pp163-168 .
- Atiat ,T.M. 2006, Al-Mujib Jordanian Nature Reserve: Historical traditions and Archaeological Evidence , **Adumatu** , Pp39-52 .
- Beaver, Alian (2005) a dictionary of Travel and Tourism Terminology,p.313
- Cooper,C. 1998 , **Tourism Principles and Practice**, 2<sup>nd</sup> Edition , New York , Addison Wesley long man . Pp (8 . 9) .
- Despax, M. 1985, **Droit de l' Environment**, Litec, Paris .
- Fennll, D.A 1999, **Ecotourism : An Introduction**, New York , Routledge
- Finlayson ,B.&etle. 2000, The Dana-Faynan-Ghuwayr Early Prehistory Projeect, **LEVANT** , v32, Pp 1-28 .
- Rogerson,M.C 2007, **Tourism Routes as Vehicles for Local Economic Development in Soth Africa: The Example of the Magaliesberg Meander, Urban Forum, Springer Netherlands**, Volume18, Number2.
- The International Ecotourism Society (**TIES**) , 2003 <http://www.Ecotorism.org> \Index .

()

( ) :

/ / :

— ( ) :

/

" :

. "

:

.

:



		:	•
		:	.1
□			
		:	.2
49 – 40 □	39 – 30 □	29 – 20 □	
			50 □
		:	.3
□			
		:	.4
□			
		..... :	.5
		..... :	.5

	•	
	. 1	
.	.	
.	:	. 2
.	.	
.	:	. 3
.	.	
.	:	. 4
.	.	
.	.	
.	.	
.	.	
.	:	. 5
.	.	
.	.	
.	.	
.	:	. 6
.	.	
.	:	. 7
.	.	
.	.	
.	.	
.	.	
.	.	

:

•

						1
						2
						3
						4
						5
						6
						7
						8
						9
						10
						11
						12
						13
						14
						15

•

						1
						2
						3
						4
						5
						6
						7
						8
						9
						10
						11
						12
						13
						14
						15

					(.. )	1
					) (...	2
						3
						4
						5
						6
					..	7
						8
						9
						10
						11
						12
						13
						14
						15